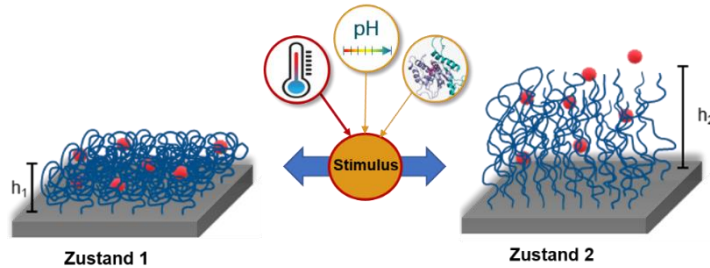


Polymer brushes as intelligent surface coatings



Switchable polymer structures for generating customized surface properties for

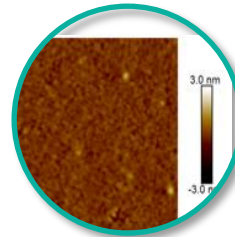
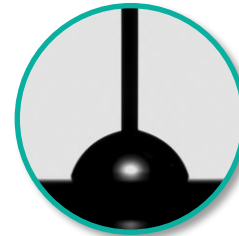
- Functional coatings (anti-ice, anti-fouling, easy-to-clean, anti-fog)
- (Thermo)responsive surfaces

What we do

- Synthesis of customized polymers
- Preparation of nanoscopic polymer brushes
- In situ characterization of brush properties
- Investigation of (thermo)responsiveness

We are looking for Bachelor students

- who are interested in the **development** and investigation of novel **switchable polymer brushes**, their **synthesis** and **characterization**.



We look forward to your response!

Dr. Petra Uhlmann / Dr. Alexander Münch
uhlmann@ipfdd.de / muench@ipfdd.de